



Australian Government  
Australian Taxation Office

# AUSkey transition: DSP face-to-face sessions

November 2019

Presented by  
DCIS Project Team

# Digital Identity update

## Available now

- myGovID app is available for Apple and Android smart phones via the Apple and Google Play stores.
- RAM is available to link your business and authorise representative to act on behalf of your business.
- myGovID together with RAM can now be used to access the:
  - ATO Business Portal
  - ATO Access Manager
  - Australian Business Register (ABR)
  - ATO Online Services for Agents
- Import AUSkey user functionality has been released in RAM, allowing an authorisation to be created based on the existing AUSkey permissions. (Note: This will only work for people with a validated IP2 myGovID).
- Support materials are available on the myGovID and RAM website. How-to-guides for checking your ABR and cleaning up your AUSkey data (key pre-requisites for AUSkey transitions) are also available.
- To date, over 165,000 myGovIDs have been created and more than 56,000 businesses have linked their ABN in RAM.

## What's coming

- More online government services – ATO is working with AUSkey relying agencies to transition their services.
  - The Dept. of Employment, Skills, Small and Family Business successfully transitioned their USI Org Portal to the new solution last week
- Manual creation of RAM relationships for exception cases (e.g. non-individual associates, IP1 only users)

# Functionality matrix

## Authorisation and role of user in RAM

Functionality

	Principal authority (Associate of the business in ABR)	Authorised user with no other roles	Authorised user with Machine Credential Administrator role	Authorised user with Authorisation Administrator role	Authorised user with both Authorisation Administrator and Machine Credential Administrator role	No authorisation in RAM
Claim Business (RAM)	✓					
Login to Portals on behalf of business	✓	✓	✓	✓	✓	
View Machine credentials	✓		✓	✓	✓	
Create and manage Machine credentials	✓		✓		✓	
Authorise others on behalf of the business	✓			✓	✓	
Use machine credentials	✓	✓	✓	✓	✓	✓
Edit permissions of machine credentials in Access Manager	✓			✓	✓	

# Machine to Machine (M2M) update

**Machine to Machine (M2M)** – The following progress has been made in delivering the M2M solution which will replace the use of device and user AUSKeys in software.

- Successful M2M EVTE trial for SBR1 and SBR2.
- The M2M solution, comprising a machine credential and a new secure token service (called Machine Authentication System – Secure Token, or MAS-ST) remains available in EVTE and we are ramping up our efforts to get DSPs to test software products.
- The M2M solution has been deployed this week.
- This includes the ability to get a machine credential via RAM and software products must be updated to point to the new MAS-ST endpoint. This is included in the endpoints document on [sbr.gov.au](http://sbr.gov.au).
- MAS-ST is compatible with device AUSKeys but not Admin or standard AUSKeys. We will be encouraging users of desktop software to get machine credentials in anticipation of the software update.
- The M2M solution has been designed to provide a simple transition for DSPs and end users.

# Business use case for the M2M solution



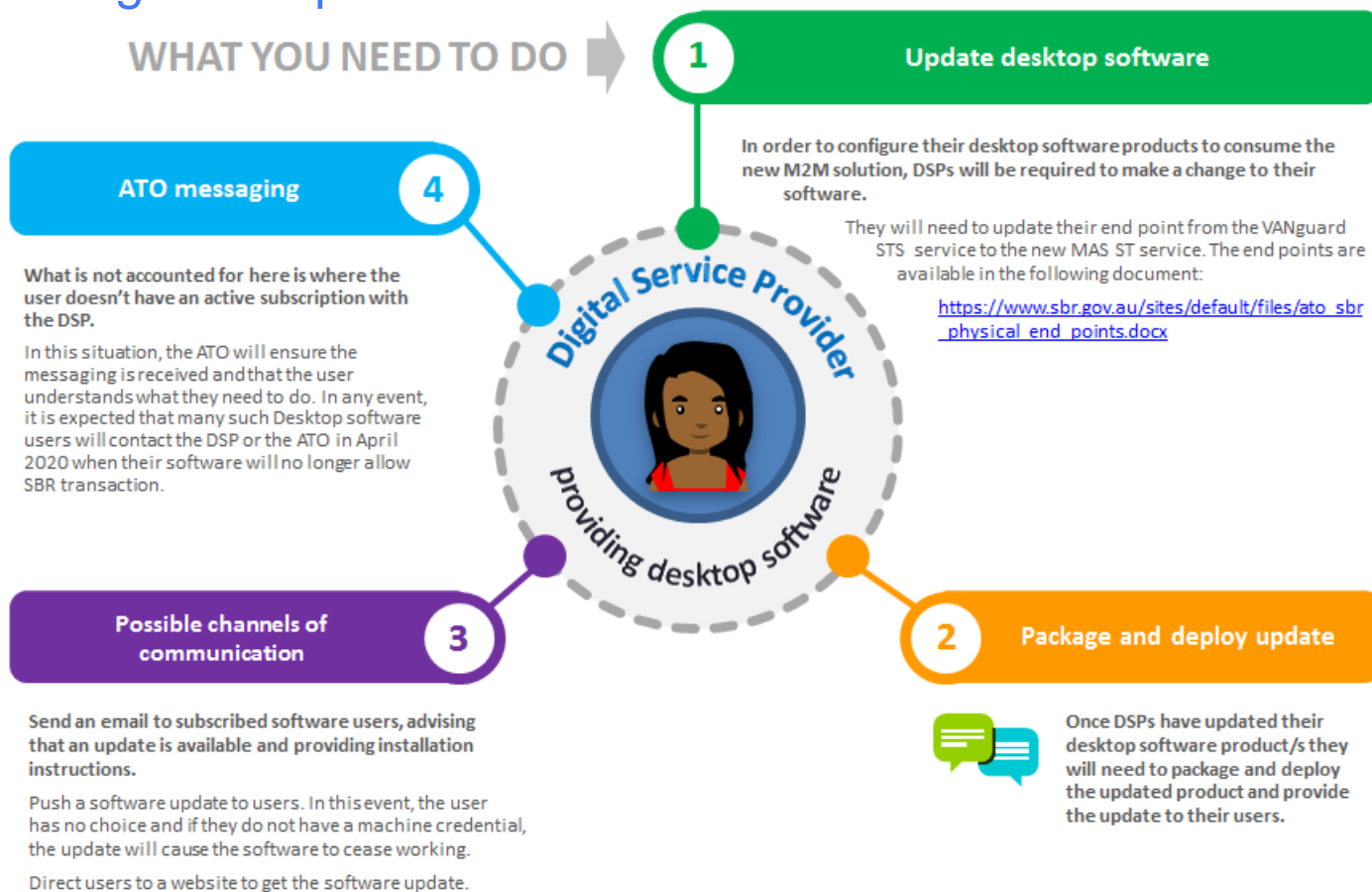
## USE CASE: I am a business using **desktop software**

- To continue to use desktop software a business will be required to get a machine credential.
- The Principal Authority for a Business can create a machine credential via RAM or appoint a Machine Credential Administrator (MCA) to create the machine credential.
- The machine credential should be obtained by the business and set up prior to receiving the updated software from their DSP which will consume the new M2M solution.

# DSP providing desktop software



## WHAT YOU NEED TO DO



# Business using desktop software



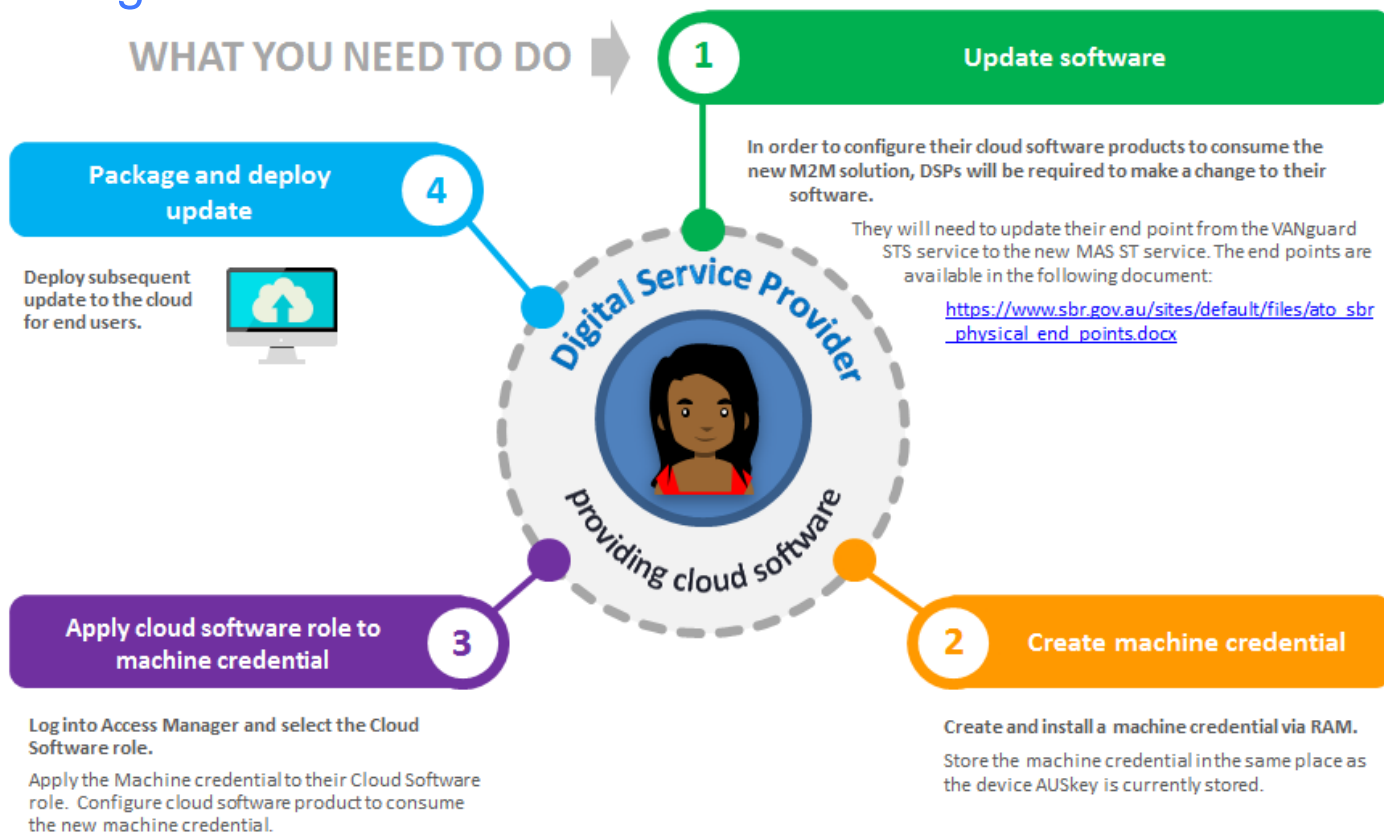
## WHAT YOU NEED TO DO



# DSP providing cloud software



## WHAT YOU NEED TO DO





# Business using cloud software



WHAT YOU NEED TO DO



1

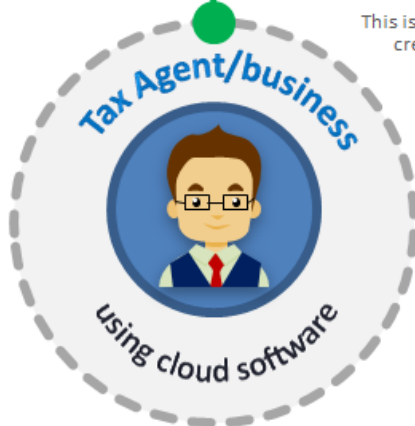
## Use updated cloud software

Where a Tax Agent or business is using cloud software (i.e. they have a cloud relationship in Access Manager with their DSP), they can continue using the product without disruption.

This is because they use the software without their own credential, and this will continue. The onus will be on the DSP to make all the updates.

Tax Agent shouldn't notice any change as all the changes will be behind the scenes.

SUBMIT



# Common issues identified from EVTE testing

The M2M solution has been available in EVTE since April 2019. The following common issues have been identified:

- Using the incorrect endpoint. (A new endpoint has been created to support the M2M solution.)  
Endpoints document is found at [https://www.sbr.gov.au/sites/default/files/ato\\_sbr\\_physical\\_end\\_points.docx](https://www.sbr.gov.au/sites/default/files/ato_sbr_physical_end_points.docx)
- Using the incorrect Applies to value  
Correct Applies to value for EVTE is <https://test.sbr.gov.au/services>
- Firewall issues
- Using an old and unsupported Software Developer Kit (SDK)  
Only the latest SDK versions are supported

## Next steps

- AUSkey will be decommissioned in March 2020.
- The M2M solution will be available from this week and you will need to get onboard as you begin to prepare.
- Get a myGovID and link your business in RAM (ensure your ABR details are up-to-date).
- Create a machine credential in RAM if you are the principal authority or machine credential administrator (MCA).

### Register now to test the new M2M solution in EVTE

To test the M2M solution in EVTE contact the DPO via:

- Online services for DSPs (OS4DSPs):
  - Log in using your AUSkey
  - Complete the SBR developer registration or new contact registration form (new users only)
  - Navigate to the M2M credential group and submit a 'Register for M2M testing in EVTE' request
- If you cannot use OS4DSPs you can email [dpo@ato.gov.au](mailto:dpo@ato.gov.au)

Once you receive the welcome pack you will be able to test the new machine credential in EVTE.



**Australian Government**  
**Australian Taxation Office**

# Questions?

