



Australian Government

Australian Taxation Office

SuperStream

Contributions V2 Testing and Cutover Guidance

This document describes the testing and production cutover processes that APRA-regulated superannuation funds and/or their intermediaries need to undertake to prepare for and support implementation of Government Contributions.

Contributions V2 Testing Handbook - CONTENTS

Page 3 – Testing Objectives and Principles

Page 4 – Testing Timeline

Page 5 – Test Phases

Page 6 – The EVTE Test Approach

Page 7 – Test Details

Page 8 – Configuring your Test Environment

Page 9 – Test Process Flow

Page 10 – Requesting and Responding to Tests

Page 11 – Steps to achieve Production Cutover

Page 12 – Supporting Artefacts

Page 13 – Contacts and Links

Contributions V2 Testing Handbook – Testing Objectives and Principles

Testing Objectives

The ATO provides an External Vendor Testing Environment (EVTE) to the superannuation industry to allow Gateways, Intermediaries and Funds to undertake **interoperability** and ATO to Fund or **Peer to Peer testing** prior to the contributions V2 (G2B) release and during the cutover period.

There are three phases of testing that will be conducted between February 2017 and Aug 2017:

- **Integration Testing** between APRA funds and their solutions providers
- **Interoperability Testing** between the gateway operators and ATO and
- **Peer to Peer Testing** between funds and the ATO.

NB: Responsibility for scheduling integration testing rests with the funds and **MUST** be completed before ATO/Fund or Peer to Peer testing can commence.

Principles

The test process has been designed to meet the requirements of the Contributions V2.0 Conformance Testing Guide. This document and other key artefacts, listed on page 12 of this guide, are published in the Contributions section on the [software developers website](#)

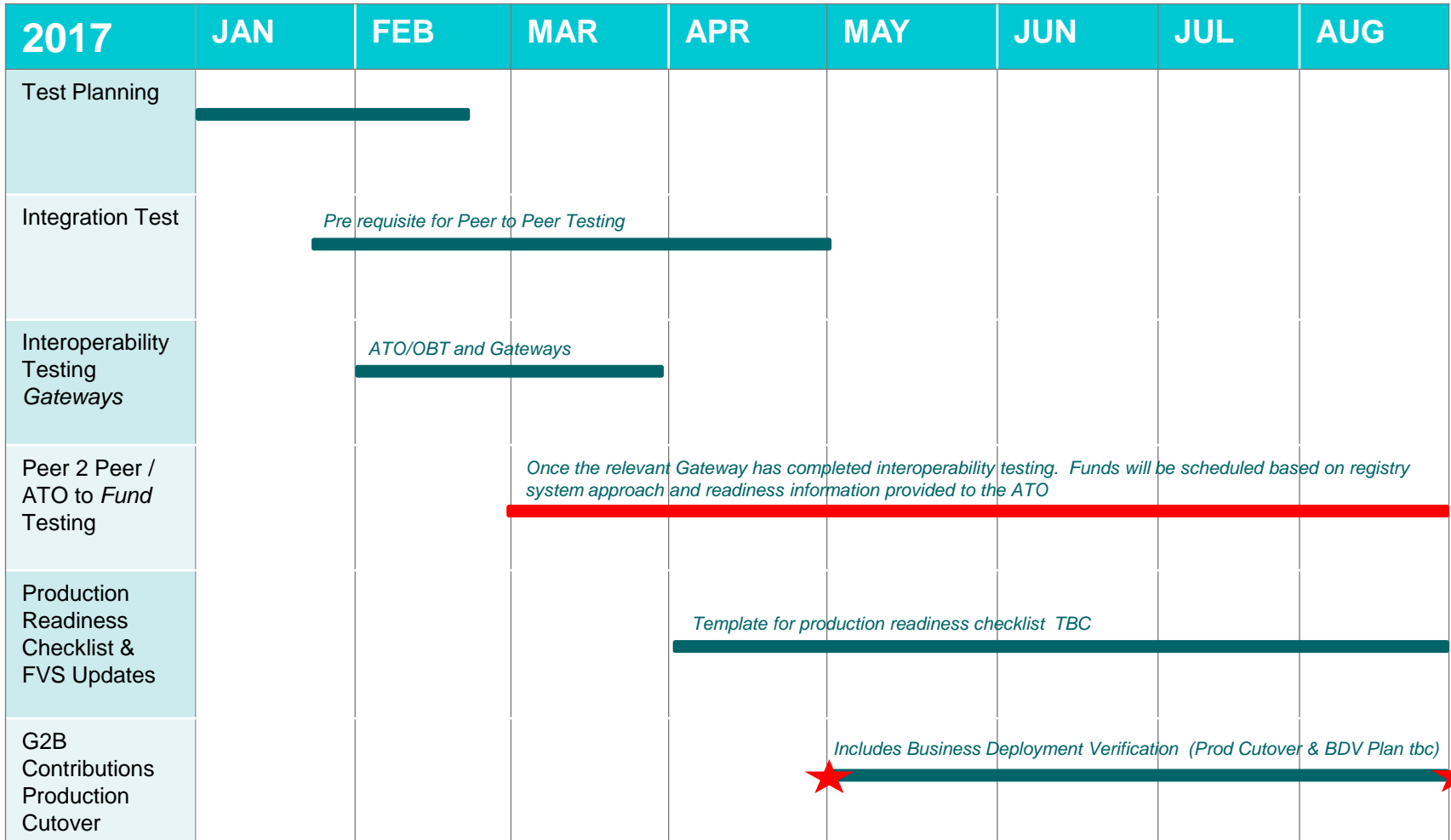
Funds have nominated readiness dates for testing and the ATO has used these dates to schedule resources to provide tests as they are requested. Tests 1 - 4 are mandatory and tests 5 – 11 are recommended, but are at the funds discretion.

Please advise if your testing schedule has changed. It is the testers responsibility to request tests.

Funds are to return the appropriate response messages. 6 of the 11 messages will require a response message. The ATO will provide details by email to the nominated tester, of the response message received.

Once the fund has completed their G2B testing with the ATO and have confirmed their systems and processes are ready to receive Government Contributions in the Data Standard, the fund is required to update their certification value on the Fund Details Register via their FVS update method and submit a production readiness checklist to the ATO.

Contributions v2.0 – Testing Timeline



Contributions v2.0 – Overview of (G2B) Test Phases

GENERAL:

- Funds are required to confirm the ABN and USI details prior to commencing Peer 2 Peer/ATO to fund testing
- Funds must be satisfied they have successfully performed sufficient testing before updating their certification value and will only be considered as ready for production after Fund Details Register has been updated (10 day period applies) and production readiness checklists have been received by the ATO.

1. INTEGRATION TESTING

- Integration test cases are the responsibility of each solution implementation team
- Test cases as per section 4 of [Contributions V2 Conformance Test Guide](#)
- The full extent of integration testing will need to be agreed between each fund and their solution provider/s.
- Integration and interoperability testing is a prerequisite for ATO to fund or Peer to Peer testing

2. INTEROPERABILITY TESTING

- Interoperability testing between Gateway and to/from ATO. It involves testing connectivity, transport and message layer however it is not necessary to confirm processing or technical validity of messages at this point.
- ATO has developed 1 test that will provide confirmation of gateway/ATO interoperability testing as per section 4.4 of the [Contributions V2 Conformance Test Guide](#).
- Interoperability testing for Gateways will be coordinated by the On boarding team within ATO

3. PEER TO PEER TESTING (ATO to fund)

- Peer to Peer testing with ATO includes confirmation that the funds are able to receive, process and respond to messages from ATO.
- ATO has developed a suite of minimum and optional test scenarios (10?) based on section 4.5 of [Contributions V2 Conformance Test Guide](#)
- Peer 2 Peer or fund testing will be scheduled and coordinated by the ATO based on fund readiness dates and registry system approach
- For G2B testing it is not necessary for every USI to complete testing with every other USI, however we require testing to be completed with at least 1 to 2 funds for each different registry system.

The EVTE Test Approach

- ❑ ATO has developed 11 test messages that Funds and Gateways are able to request, receive and process, to simulate different Government contributions scenarios.
- ❑ Tests 1 to 4 are the minimum that all funds involved in testing will need to complete. The additional optional tests can be requested at the same or a later time.
- ❑ Refer to next page for details of each test, including description, the scenarios covered in the Conformance Testing Guide, the member/s used and the expected result. An additional mapping table exists in the 1st tab of the Test Data sheet.
- ❑ The test scenarios range in complexity from very simple and single member message/tests to more complex scenarios of multimember and multiproduct.
- ❑ To achieve the expected outcomes funds are responsible for ensuring that the member test data is correctly configured into their test environments and their testing personnel are ready to commence P2P testing with the ATO prior to requesting test messages.
- ❑ With a correctly configured test environment, 6 of the 11 tests will result in a response messages. Of the mandatory 4 tests, 3 will result in response messages being sent back to the ATO. These are defined in the 2nd tab of the Test Data sheet.
- ❑ It will be the testing funds responsibility to monitor their results for the tests that do not require responses and be satisfied their system functionality has been validated.

Test Details

(Mandatory/Optional)

Test No.	Test Description	Conformance Testing Guide P2P Scenarios Exercised	Member/s used in Test	Expected Result
1	Valid single member, single business document GCTR with TFN, record count, SHAsaLISC populated. Member no longer current with fund	GCTR1.1, 1.5, 1.10	4	GCTER
2	Valid single member GCTR with no TFN, record count populated – SG	GCTR1.3, 1.5, 1.6	9	Message Actioned - NFA
3	Valid multi member, single business document GCTR single/multi member; no TFN; LISC , member not found	GCTR1.2, 1.4, 1.5, 1.8, 1.12, CGTER2.2, 2.3, 2.6	1,2,3,4,5,6,7,8,9,10#1,10#2	GCTER
4	Valid multi member, single business document GCTAR single/multi member; no TFN; CoCons , insufficient funds	GCTAR3.2, 3.3, 3.4, 3.5, 3.8, 3.9, GCTAOR 4.1, 4.2, 4.3, 4.4, 4.5	1,2,3,5,6,7,8,9,10#1,10#2	GCTAOR
5	GCTR, SHAsaCoCons , single member not found	GCTR1.1, 1.5, 1.7, GCTER2.1	4	GCTER
6	GCTR, single member, SHAsa	GCTR1.1, 1.5, 1.9	1	Message Actioned - NFA
7	GCTR single member, CoCons	GCTR1.1, 1.5, 1.11	1	Message Actioned - NFA
8	Multi business document GCTR, SG, SHAsaCoCons, SHAsaLISC, SHAsaTaxable	GCTR1.1, 1.5, 1.6, 1.7, 1.9, 1.10	1	Message Actioned - NFA
9	GCTAR single member SG , process successful	GCTAR3.1, 3.6, GCTAOR 4.3	6	GCTAOR
10	GCTAR single member LISC , process successful	GCTAR3.1, 3.7, GCTAOR 4.3	6	GCTAOR
11	Valid single member; single business document GCTR with TFN – SG Amount with overseas address	GCTR1.1, 1.6	11	Message Actioned - NFA

Configuring your Test Environment

Test Data

To obtain the optimum test experience, it is the testers responsibility to correctly configure their test environment. The data required to be configured in your test environment is contained in a Test Data Excel sheet published on the [software developers website](#)

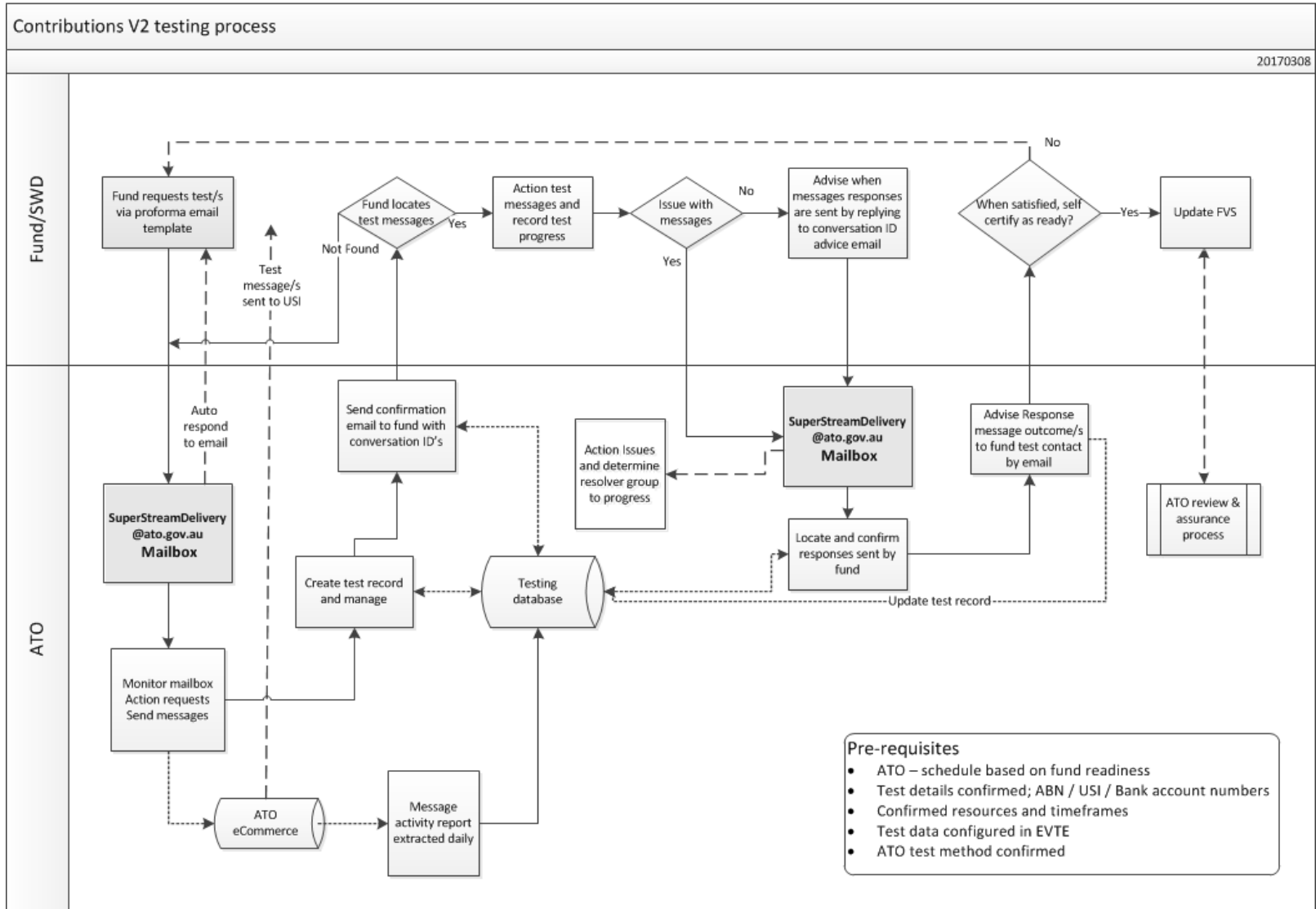
The Test Data workbook contains;

- mapping of the Contributions V2.0 Conformance Testing Guide G2B scenarios to the 11 message Test Suite available via the EVTE
- Member data for each 11 members used in the EVTE tests
Note: Member 4 is used in test messages, but your test environment needs to be configured so that member 4 is “no longer with fund”
- A matrix showing which members are included in each test together with the expected outcome and response message for each member for each test
- Each test has it’s own tab where the message elements are defined including expected responses

Sample Messages

Each of the 11 test messages from the ATO’s EVTE have been captured and published to the [software developers website](#). These sample messages are not required for testing, but intended to be of value for testers, should issues be experienced. The sample messages provide a view of message structure and element values including the message header and payload.

Test Process Flow



Requesting and Responding to Tests

Requesting tests

1. Once your integration testing is complete with your Gateway and your test environment is configured with the supplied member data, 1 or more tests can be requested to the SuperStreamDelivery@ato.gov.au mailbox.
2. An email template is available from the [Software Developers Website](#) or you can request tests by providing:
 - Testers contact details – Name, email and contact number/s
 - Fund Name
 - ABN
 - USI
 - Test Number/s required (any combination of tests may be requested in one email)
 - Please include testing Fund Name and USI in the email Subject
3. The ATO will send the requested test messages and the email will be replied to the following working day with message details including ConversationIDs.

Responding to Tests

1. The expected outcome from tests 1, 3, 4, 5, 9 and 10 is an error response or outcome response messages. Please reply to the test email thread once the response messages have been sent back to the ATO.
2. The ATO will confirm the receipt of the messages into EVTE the following day and will respond with the outcome on the same email thread.

Tracking Testing

1. Funds are required to track and monitor their testing progress and are responsible for determining their solutions functional performance.
2. The ATO will track, monitor and report the progress and status of testing for overall industry.

Steps to achieve Production Cutover

Preparing for Cutover

It is the funds decision to determine their readiness to cutover. Aspects to consider in this decision include:

- Sufficient testing has been conducted to allow self certification of production systems and operational processes
- There is a lead time of 10 business days to update the certification details on the Fund Details Register before it becomes active
- Once a USI on the FDR has an active GCON2.0-X certification value, that USI will receive all Government Contributions and Amendment Requests in the Data Standard.

Updating the Fund Details Register

Please refer to the Fund Validation Service User Guide to add the GCON2.0-X certification value

To assist in determining what start date you should use for the commencement of GCON2.0-X refer to the production run schedule included in the Super Communique. We will also publish a concise production calendar on Let's Talk.

Receiving Government Contributions in the Data Standard

Once the Fund Details Register has an active GCON2.0-X certification value for a USI, that USI will receive all future Government contributions in the Data Standard. There is no opportunity to provide smaller ad-hoc runs in the production environment. All products will be included from your certification start date, per the production calendar which will be published in the Let's Talk site.

Key Artefacts Required

- [Member Registration and Contributions User Guide \(Final\)](#)
- [Contributions Version 2.0 Conformance Testing Guide \(Final\)](#)
- [Contributions Test Data](#)
- [Contributions Message Samples](#)
- [Contributions V2 Schematron \(Final\)_Feb17](#)
- [Fund Validation Service User Guide](#)
- [Contributions Message Implementation Guide - schedule 4A](#)
- [Contributions v2 cutover plan](#)
- [Frequently Asked Questions for Contributions v2.0](#)

Questions/Feedback:

superstreamstandards@ato.gov.au

Testing Requests and Testing Support:

superstreamdelivery@ato.gov.au

Further information:

<http://softwaredevelopers.ato.gov.au/SuperStreamStandard>